

VERITY® 1920 MS Mass-directed CPC Purification

Safely & Quickly Isolate Added Value Molecules With High Yields And Purity For Natural Extracts



SPEC SHEET | PURIFICATION

VERITY 1920 MASS SPECTROMETER FOR COMPACT VERITY CPC MS SYSTEMS

- **PURIFY WITH CONFIDENCE**
- **STREAMLINE YOUR PURIFICATION WORKFLOWS**
- **WORKHORSE IN THE LABORATORY**
- **COMPATIBLE WITH FLASH, HPLC, AND CPC TECHNOLOGY**

The single quadrupole VERITY 1920 Mass Spectrometer delivers high sensitivity and selectivity for reproducible fraction collection. Save valuable time and maximize productivity by combining the power of mass detection with the fraction collection options offered by VERITY® CPC systems from lab- to pilot-scale.



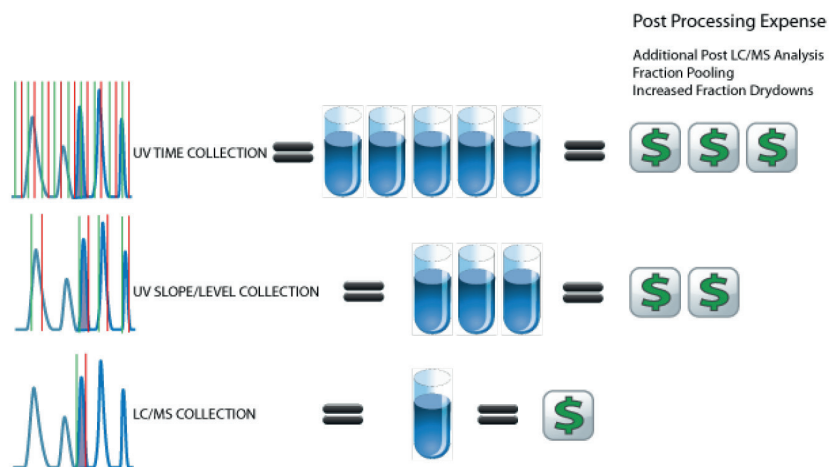
Figure 1

VERITY® 1920 Mass Spectrometer

TARGETED MASS PURIFICATION BENEFITS

By combining multiple signal sources, such as UV-VIS and mass data from the VERITY 1920 Mass Spectrometer, purification workflows are greatly improved:

- Only targeted compounds are collected, reducing the number of fractions and post-processing costs
- Low UV absorptive compounds can be collected with high sensitivity and selectivity
- Improve fraction purity for co-eluting compounds in association with conditional fraction collection
- in real-time, Identify which tubes your compounds of interest have been collected



**VERITY COMPACT SYSTEMS:
IDEAL FOR ISOLATION OF BIOLOGICALLY ACTIVE
COMPOUNDS FROM NATURAL EXTRACTS**

- Single point of control via GLIDER Software: An Intuitive Flash, HPLC, and centrifugal partition chromatography (CPC) software
- High loading capability for CPC
- Semi-preparative to pilot purification options
- Advanced conditional fraction collections modes
- Space-saving compact system



Figure 2

VERITY® CPC MS System

VERITY® 1920 MASS SPECTROMETER SPECIFICATIONS

VERITY® 1920 MASS SPECTROMETER SPECIFICATIONS	
Part Numbers: 18105000 (110V), 18105001 (120V), 18105002 (100V)	
Specification	Description
Type of Mass Detector	Single Quadrupole
Mass Range	10-2000 m/z
Scan Speed	10,000 m/z sec ⁻¹
Sensitivity (ESI+ @ 10pg reserpine)	100:1
Mode	Positive or negative ESI Positive or negative APCI
Accuracy	± 0.1 m/z
Resolution	± 1 m/z
Dynamic Range	4.5 orders of magnitude
Vacuum Pump	Two-stage, oil-sealed, sliding-vane vacuum pump (Edwards RV12)
Gas Supply	4.1-6.9 bar (60-100 psi) > 98% pure Nitrogen < 8 L/min - Practical 5 L/min
Power Consumption	600 VA maximum
Dimensions (L x W x H)	56 x 28 x 66 cm (22 x 11 x 26 in.)
Weight	32 kg (70.5 lbs.)

VERITY® 1920 MASS SPECTROMETER SPLITTER SPECIFICATIONS	
Specification	Description
Type	Active splitter and make-up pump controlled by Gilson software
Split Ratio	Selectable from 1:100 to 1:100,000 for flow up to 100 mL/min
Make-up Pump	VERITY® 3011 Isocratic Pump with 5SS pump head
Make-up Flow	0.001-5 mL/min
Make-up Flow Precision	< 1% RSD with water at ambient temperature and pressure at 1.4-600 bar (20-8700 psi)